



BUTLER & STAG
FOR SALE
01992 667666
www.butlerandstag.co.uk

Danbury Road, Loughton, IG10

BUTLER & STAG



**Guide Price £400,000 -
£425,000**

**Positioned in a quiet turning,
this well presented ground
floor three bedroom
maisonette is situated on a
popular road in Loughton.**



Leasehold

- Ground Floor Maisonette
- Own Driveway
- Chain Free
- Three Bedrooms
- Recently Painted/New Carpets
- Roding Valley Nature Reserve Nearby

Internally, the property offers an abundance of living space which includes a bright & airy lounge fully fitted kitchen with plenty of storage cupboards, two double bedrooms a single bedrooms and a family bathroom.

Externally, the property comes its own driveway and its own private garden. Close by is Roding Valley Nature Reserve which is a vast area of open playing fields, ideal for families, dog walkers or fitness fanatics.

Loughton is known for its scenic views and being on the border of Epping Forest. It has excellent transport links into London from Loughton underground station, with the M11 and M25 being close by. With its highly regarded state and private schools within easy reach, its stylish, popular boutiques and abundance of eateries/bars makes it a desirable location.

Council-Epping Forest
Tax Band-C

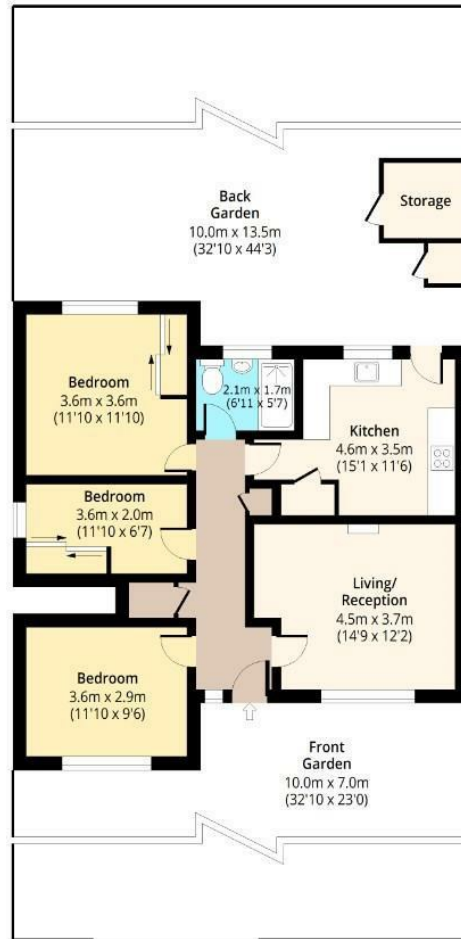




Danbury Road, IG10

Ground Floor

Approx. 77.29 Sq. meters (832 Sq. feet)



Total area: approx. 77.29 Sq. meters (832 Sq. feet)

For illustration purposes only - not to scale

www.lpaplus.com



BUTLER & STAG

☎ 01992 667666

🏠 4 Forest Drive, Theydon Bois, Essex, CM16 7EY

✉ theydon@butlerandstag.com

www.butlerandstag.uk

IMPORTANT NOTICE - These particulars have been prepared in good faith and they are not intended to constitute part of an offer or contract. We have not performed a structural survey on this property and the services, appliances and specific fittings have not been tested. All photographs, measurements, floor plans and distances referred to are given as a guide and should not be relied upon.